



www.PetroRigs.com





www.PetroRigs.com

08887 NS

www.PetroRigs.com

B + V

731000



432021
3/10-2

DOSE
REZ112

Yale



SN 78880

www.PetroRigs.com

B-4-V

P67030

PWH

P677112

P677112

Yale



www.PetroRigs.com



www.PetroRigs.com

775630-219
20°
SM 18 5/8"

775630-247
18 5/8" - 18"
SM 18 5/8"

775630-247
18 5/8" - 18"
SM 18 5/8"

775630-247
18 5/8" - 18"
SM 18 5/8"



www.PetroRigs.com



www.PetroRigs.com

FWH 7/09-1
86712

FWH 6/10-1
86712

www.PetroRigs.com

775120-3 SN 86712

22"

SN 93902

775120-3

30-245

NEW



www.PetroRigs.com

775120-3
22"
SN 9832

22"
775120-3 SN 9812

FWR 8/10-1
88712

NEW

775630-245
16"
SN 114252 332

NEW

FWR 7/89-1
88712



www.PetroRigs.com

www.PetroRigs.com





www.PetroRigs.com



www.PetroRigs.com

775630-247 CSG
18 5/8" 18"
210kN
PS-750/2 & 1000
Made in Germany

SN 90178

www.PetroRigs.com

775630-247
18 5/8" - 18"

775630-247 CSG
18 5/8" 18"
SN 90178 210kN
PS-750/2 & 1000
Made in Germany

www.PetroRigs.com

84662 1

775630-249
20" x 20"
SN84632

775630

84632
SN 84632

725630-249
20" 2

www.PetroRigs.com

84662

The image shows a large, orange-painted metal component, possibly a wellhead or valve part, with a curved, flange-like shape. It features several circular holes and a central rectangular area with a different texture. The component is mounted on a wooden dowel, and a grid of metal teeth is visible below it. The background shows other similar components and a yellow container.

www.PetroRigs.com



www.PetroRigs.com

A close-up photograph of a large, orange-painted industrial gear. The gear has a series of dark, metallic teeth arranged in a semi-circular arc. The teeth are slightly worn and have a dark, possibly rusted or oil-coated surface. The gear is mounted on a structure, and the background shows other parts of the machinery, including a yellow light source on the left and right sides. A watermark is overlaid on the center of the image.

www.PetroRigs.com

775630-249 20"
SN 84632

84632 1

www.PetroRigs.com

775630-249
20" x 20"
SN84632

A close-up photograph of a large, orange, curved industrial component, likely a part of a wellhead or valve assembly. The component has a textured surface and features a central silver metal plate with a threaded hole. The background shows other parts of the assembly, including a wooden post and a metal grate.

www.PetroRigs.com



www.PetroRigs.com



www.PetroRigs.com

www.PetroRigs.com



A close-up photograph of a large industrial component, likely a part of a pump or compressor. The component is primarily painted orange, with a central section consisting of numerous grey, ribbed blades or vanes arranged in a semi-circular pattern. The top edge of the orange housing features a series of rectangular protrusions and circular holes. The bottom edge shows mounting brackets with circular holes. The overall appearance is that of a heavy-duty mechanical part.

www.PetroRigs.com



www.PetroRigs.com

A close-up photograph of a yellow industrial component, likely a part of a pump or compressor. The component features a series of dark, curved metal blades or vanes arranged in a fan-like pattern. The blades are mounted on a yellow frame. The image is watermarked with the website address www.PetroRigs.com.

www.PetroRigs.com



www.PetroRigs.com

www.PetroRigs.com

775630-247
18 5/8" - 18"

775630-247
90179

SN 90179

www.PetroRigs.com

775000

16" x 16"

RT
83

RTW
CE

133 145N 11252 332 1000

for PS-750/2 2 1000

2016 Made in China

SN 90139

275630-262
18 5/8" - 18"

www.PetroRigs.com



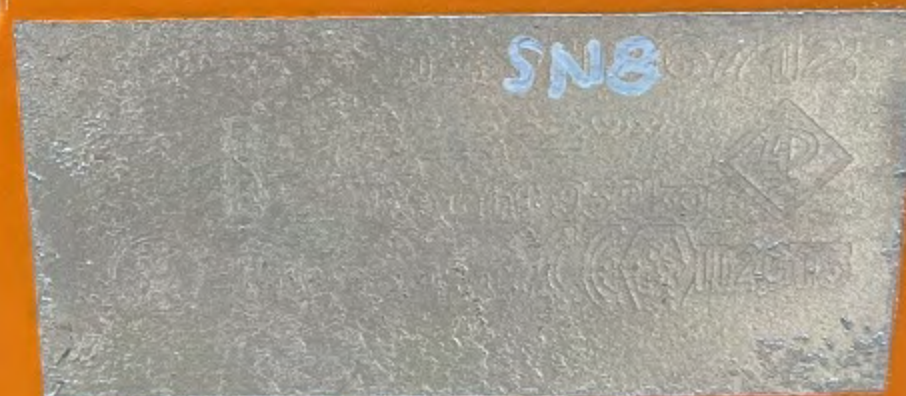


www.PetroRigs.com

775120-3 SN 86712

www.PetroRigs.com

22"



775030 245

www.PetroRigs.com



A close-up photograph of a large, orange-painted industrial component, likely a part of a drilling rig. The component features a circular grate with vertical bars and a textured surface. Several circular openings are visible on the top surface. A watermark is overlaid on the image.

www.PetroRigs.com

NEW

775630-245

16"

NEW

www.PetroRigs.com

SN 114252352



www.PetroRigs.com

775120-3

22"

www.PetroRigs.com



SN 93902



www.PetroRigs.com

www.PetroRigs.com

14-3/4"-20"

775120-2

88165

775120-2

88165





www.PetroRigs.com

120-1 SN 101326

2-3/8" - 14"

756421

756476

756422

101326

101326



www.PetroRigs.com

756425

756425