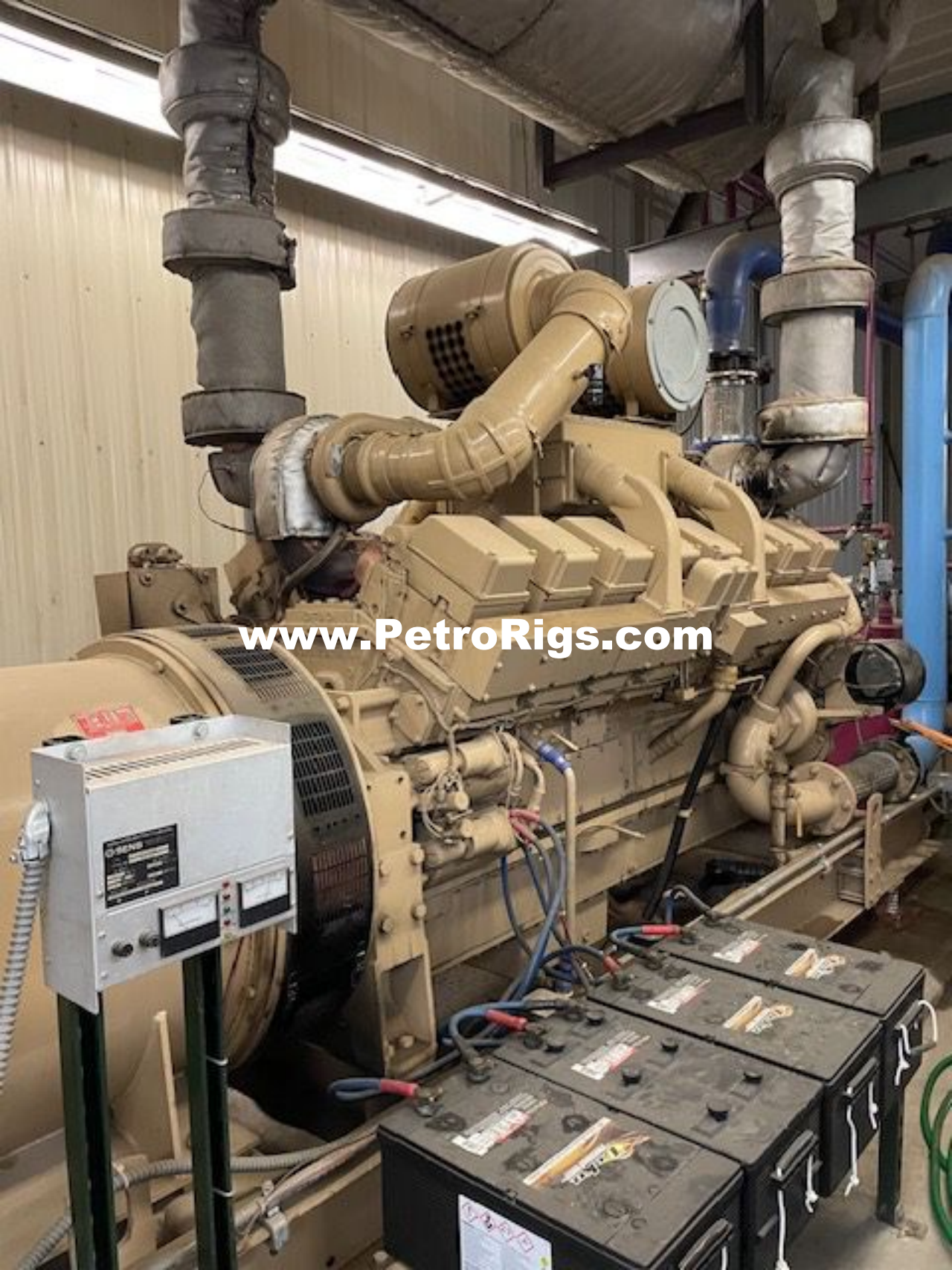




[www.PetroRigs.com](http://www.PetroRigs.com)

[www.PetroRigs.com](http://www.PetroRigs.com)





2

**CAUTION**  
EQUIPMENT STARTS  
UNEXPECTEDLY

[www.PetroRigs.com](http://www.PetroRigs.com)



[www.PetroRigs.com](http://www.PetroRigs.com)



[www.PetroRigs.com](http://www.PetroRigs.com)



[www.PetroRigs.com](http://www.PetroRigs.com)



[www.PetroRigs.com](http://www.PetroRigs.com)



[www.PetroRigs.com](http://www.PetroRigs.com)



[www.PetroRigs.com](http://www.PetroRigs.com)



2

**CAUTION**  
THIS  
EQUIPMENT  
STARTS

[www.PetroRigs.com](http://www.PetroRigs.com)



3

**CAUTION**  
THIS  
EQUIPMENT  
STARTS  
AUTOMATICALLY

Cummins

[www.PetroRigs.com](http://www.PetroRigs.com)





[www.PetroRigs.com](http://www.PetroRigs.com)

NON AUTO PRE-LOP

SHUT-DOWN

PRE-HWT LWT



OVER SPEED

LOW OIL PRES

COOLANT



www.PetroRigs.com

1

SPEED ADJUST  
IDLE

CIRCUIT BREAKER  
PUSH TO RESET

CRANK  
MANUAL START  
START  
RUN  
OFF



RUN



NON AUTO PRE LOP SHUT-DOWN PRE HWT LWT



OVER SPEED LOW OIL PRES COOLANT



www.PetroRigs.com



2

SPEED ADJUST  
IDLE



RUN

CIRCUIT BREAKER  
PUSH TO RESET

CRANK  
MANUAL START  
START  
RUN  
OFF



NON AUTO PRE LOP SHUT-DOWN PRE:HWI LWI



OVER SPEED LOW OIL PREC COOLANT



[www.PetroRigs.com](http://www.PetroRigs.com)



3

SPEED ADJUST  
IDLE

CIRCUIT BREAKER  
PUSH TO RESET

CRANK  
MANUAL START  
START  
RUN  
OFF



RUN



NON AUTO PRE LOP

SHUT-DOWN

PRE HWT LWT



OVER SPEED

LOW OIL PRES

COOLANT



[www.PetroRigs.com](http://www.PetroRigs.com)



4

PEED ADJUST  
IDLE

CIRCUIT BREAKER  
PUSH TO RESET

CRANK  
MANUAL START  
START  
RUN



RUN



**A.C. GENERATOR TO NEMA MG1-22.84**

SERIAL No	4584974	Kw	11.57	Hz	60	PHASE	3
TYPE	SC7346	K.V.A.	14.55	STATOR Wdg.	SPEC		
P.F.	0.8	R.P.M.	1800	STATOR CON.	S7A3		
VOLTS	480/277	AMPS	1755	ENCLOSURE	CP22		
RATING	CONT	AMBIENT TEMP	40	INSULATION CLASS	B		
EXCITATION VOLTS		37	AMPS	10.50			

WARNING: READ INSTRUCTION BOOK BEFORE  
OPERATING

MANUFACTURED BY  
NEWAGE ENGINEERS LTD.  
P.O. BOX 11, STAMFORD  
ENGLAND

**NEWAGE**  
**STAMFORD**

NEWAGE LTD., FOLCROFT, P.A. 19032 U.S.A.

[www.PetroRigs.com](http://www.PetroRigs.com)

**A.C. GENERATOR TO NEMA MG1-22.84**

SERIAL No **850475** Kw **1167** Hz **60** PHASE **3**  
**50734E** R.P.M. **1458** STATOR WDG **SUBB**  
TYPE **0-8** AMPS **1758** STATOR CON. **STAR**  
P.F. **480/277** AMBIENT TEMP **40 C** ENCL. **IP-20**  
VOLTS **600V** AMPS **1-50** INSULATION CL.

**WARNING** REFER TO INSTRUCTION BOOK BEFORE  
FLASH OR MEGGER TESTING



MANUFACTURED BY  
NEWAGE ENGINEERS LTD.  
PO BOX 17, STAMFORD  
ENGLAND

**NEWAGE LTD., FOLCROFT, P.A. 19032 U.S.A.**

REG. U.S. PAT.  
AND T.M. OFF.

[www.PetroRigs.com](http://www.PetroRigs.com)

[www.PetroRigs.com](http://www.PetroRigs.com)

**A.C. GENERATOR TO NEMA MG-1**

SERIAL No. J5849/2

Kw 1167

Hz 60 PHASE 3

TYPE

SC734C

K.V.A. 1459

STATOR Wdg. SPEC

P.F.

0.8

R.P.M. 1800

STATOR CON. STAR

VOLTS

480/277

AMPS 1755

ENCLOSURE IP22

RATING

CONT

AMPS 40

INSULATION CLASS H

**WARNING**

REFER TO INSTRUCTION BOOK BEFORE  
FLASH OR MEGGER TESTING

**NEWAGE  
STAMFORD**

REG. U.S. PAT  
AND T.M. OFF.

MANUFACTURED BY  
NEWAGE ENGINEERS LTD.  
P.O. BOX 17, STAMFORD,  
ENGLAND

NEWAGE LTD., FOLCROFT, P.A. 19032 U.S.

Engine No. Serial No.	33109469	Advert. HP Poiss. Indiquée(Ch)	1620	rpm	1800	ECC
Family	D028	Peak Torque(T.LB) Torque Crm		rpm		Vt. Dr. Colge
Model Modèle	KT450G2	Full rated Advert. HP DCC-Comp. à Puiss. Indiquée		mm stroke		C.I.O. Pouce
Date of Mfg Date Fabricat.	1/95	Valve Lash Coll V. Lash Coll	.014	Wt Adm	.027	Exh. Ech.
Idle Speed RPM Vitesse de Ralent		Course Inj				Oil Vl
Ref. No.	S.O. NO. 51084.					

www.PetroRigs.com

[www.PetroRigs.com](http://www.PetroRigs.com)

Engine No. Motor No. Family Name	340277 DO 28 KTA50G2	Configuration Torque Code	307	Rated Capacity	100	Rated Capacity	100
Model Number	DO 28 KTA50G2	Factory Code Type	307	Rated Capacity	100	Rated Capacity	100
Date of Mfg. Date Fabrication	3-85	Rated Capacity	100	Rated Capacity	100	Rated Capacity	100
Rated RPM Gross or Net	0	Rated Capacity	100	Rated Capacity	100	Rated Capacity	100
Part No.	50-51076	Rated Capacity	100	Rated Capacity	100	Rated Capacity	100

CAUTION: Do not use this engine for any application other than that for which it was designed. Use only the recommended oil and fuel. Do not use this engine for any application other than that for which it was designed. Use only the recommended oil and fuel. Do not use this engine for any application other than that for which it was designed. Use only the recommended oil and fuel.

AVERTISSEMENT: Danger de blessures et d'incendie. Ne pas utiliser ce moteur pour une application autre que celle pour laquelle il a été conçu. Utilisez uniquement l'huile et le carburant recommandés pour ce modèle et cette application.

100482

[www.PetroRigs.com](http://www.PetroRigs.com)

Serial No. 35109469	Adjust RPM Drops (incl. 0.000)	1620	at	1800	rpm	F.C.S.	PSI	+	IMPORTANT: See CAUTION
Part No. D028	Peak Torque (F.C.S.)								Success 10
Model 1KT150G2	Oil (oil only)								1000
Date of Mfg. Date Fabrication	Valve Lash Call Jeux Soupapes à l'arrêt	.014	in. Adm.	.027		0687			1000
Min Speed RPM Vitesse de Réglé	In. Set Course in								1000
Ref. No. S.O. NO. 51084.									1000

Caterpillar  
C  
34063

Caterpillar Engine Co., Inc.  
Made in U.S.A.

Governed Speed  
Vitesse Gouvernée

0687

Engine No. 33109470  
Moteur No.

Family D028  
Famille

Model KTA50G2  
Modèle

Date of Mfg. 4/85  
Date Fabrication

Idle Speed RPM  
Vitesse de Ralenti

Ref. No. S.O. NO. 51084

Advert. HP  
Puiss. Indiquée(ch)

1620

at

1800

RPM

E.C.S.

Peak Torque (L.B)

at

RPM

Inj. Tim

Calge

Fuel rate at Advert. HP

Débit Combust à Puiss. Indiquée

min

stroke

C.I.E

Pou

Valve Lash Cold  
Jeux Soupapes à Froid

.014

Inj. Adm.

027

Exh.

Ectf

CPL

Go

Inj. Set  
Course Inj.

307

Go

Vit

www.PetroRigs.com

Engine No. 33109470  
Moteur No.

Family DQ28  
Famille

Model KTA50G2  
Modèle

Date of Mfg. 4/85  
Date Fabrication

Idle Speed RPM  
Vitesse de Ralenti

Ref. No. S.O. NO. 51084

Advert. HP  
Puiss. Indiquée(ch)

Peak Torque(FT-LB)  
Couple

Fuel rate at Advert. HP  
Débit Combust. à Puiss. Indiquée

Valve Lash Cold .01  
Jeux Soupapes à Froid

Inj. Set 307  
Course Inj.

1620

www.PetroRigs.com



Advert. HP Puiss. Indiquée(ch)	1620	at	1800	RPM	E.C.S.
Peak Torque(FT-LB) Torque-Cime		at		RPM	Inj. Timing Code Calge d'injection
Fuel rate at Advert. Débit Combust. à Puiss. Indiquée				On stroke	D./L Pouce Cube
Valve Lash Cold Jeux Soupapes à Froid	.014	Int. Adj.	.027	Exh. Ectf.	CPL 0687
Inj. Set Course Inj.	307				Governed Speed Vitesse Gouvernée

[www.PetroRigs.com](http://www.PetroRigs.com)

Cummins Engine Co  
Made in U.S.A.