



[www.PetroRigs.com](http://www.PetroRigs.com)



[www.PetroRigs.com](http://www.PetroRigs.com)

[www.PetroRigs.com](http://www.PetroRigs.com)



[www.PetroRigs.com](http://www.PetroRigs.com)





[www.PetroRigs.com](http://www.PetroRigs.com)



[www.PetroRigs.com](http://www.PetroRigs.com)



[www.PetroRigs.com](http://www.PetroRigs.com)



[www.PetroRigs.com](http://www.PetroRigs.com)





[www.PetroRigs.com](http://www.PetroRigs.com)



[www.PetroRigs.com](http://www.PetroRigs.com)



[www.PetroRigs.com](http://www.PetroRigs.com)



[www.PetroRigs.com](http://www.PetroRigs.com)



[www.PetroRigs.com](http://www.PetroRigs.com)



[www.PetroRigs.com](http://www.PetroRigs.com)



[www.PetroRigs.com](http://www.PetroRigs.com)



[www.PetroRigs.com](http://www.PetroRigs.com)





www.PetroRigs.com



[www.PetroRigs.com](http://www.PetroRigs.com)



[www.PetroRigs.com](http://www.PetroRigs.com)



[www.PetroRigs.com](http://www.PetroRigs.com)



[www.PetroRigs.com](http://www.PetroRigs.com)



[www.PetroRigs.com](http://www.PetroRigs.com)



[www.PetroRigs.com](http://www.PetroRigs.com)



[www.PetroRigs.com](http://www.PetroRigs.com)





[www.PetroRigs.com](http://www.PetroRigs.com)

[www.PetroRigs.com](http://www.PetroRigs.com)



[www.PetroRigs.com](http://www.PetroRigs.com)



[www.PetroRigs.com](http://www.PetroRigs.com)



[www.PetroRigs.com](http://www.PetroRigs.com)





[www.PetroRigs.com](http://www.PetroRigs.com)



[www.PetroRigs.com](http://www.PetroRigs.com)

A large, green-painted industrial machine, possibly a pump or compressor, is mounted on a red metal deck. The machine features several vertical red pipes with curved tops, secured with metal bands. The structure is complex, with various beams and supports. In the background, a white corrugated metal wall is visible on the left, and a red metal railing runs along the edge of the deck on the right. The sky is overcast.

[www.PetroRigs.com](http://www.PetroRigs.com)





[www.PetroRigs.com](http://www.PetroRigs.com)

[www.PetroRigs.com](http://www.PetroRigs.com)





[www.PetroRigs.com](http://www.PetroRigs.com)

[www.PetroRigs.com](http://www.PetroRigs.com)





[www.PetroRigs.com](http://www.PetroRigs.com)

[www.PetroRigs.com](http://www.PetroRigs.com)



RIG  
LIFTING CO  
FEBRUARY TO  
**YELL**

**FAST**

[www.PetroRigs.com](http://www.PetroRigs.com)



[www.PetroRigs.com](http://www.PetroRigs.com)







[www.PetroRigs.com](http://www.PetroRigs.com)



[www.PetroRigs.com](http://www.PetroRigs.com)

NUESTRA  
META  
NO TEMER  
ACCIDENTES  
REPORTE  
CUALQUIER  
LESION O ACCIDENTE  
AL EMPLEADO

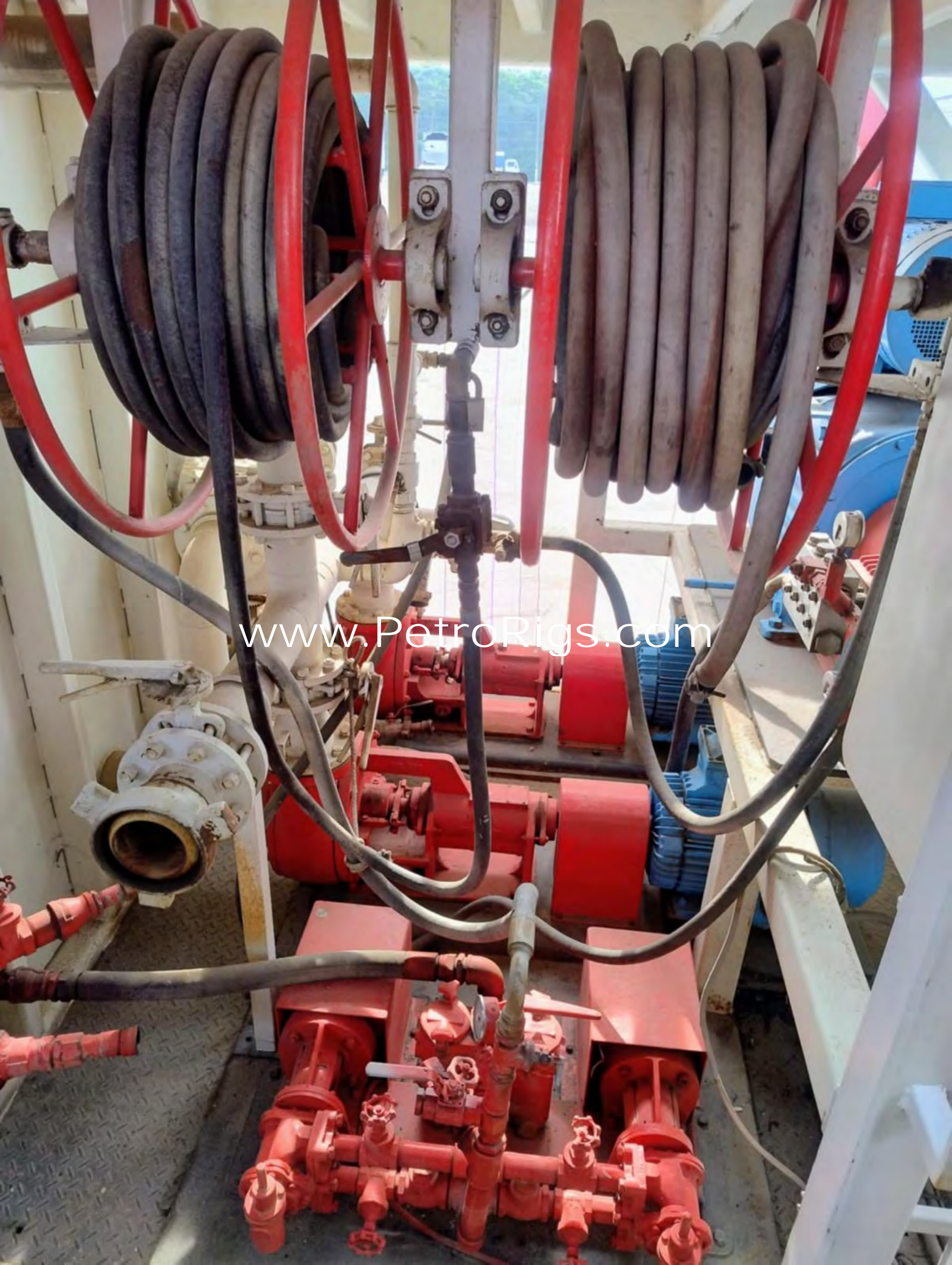


[www.PetroRigs.com](http://www.PetroRigs.com)





[www.PetroRigs.com](http://www.PetroRigs.com)



[www.PetroRigs.com](http://www.PetroRigs.com)



[www.PetroRigs.com](http://www.PetroRigs.com)



[www.PetroRigs.com](http://www.PetroRigs.com)

[www.PetroRigs.com](http://www.PetroRigs.com)





A photograph of a large industrial structure, likely a component of an oil rig. The structure is painted a bright red color and features a complex network of beams and supports. To the left, a white structure is visible, and in the background, a blue container or shed is present. The sky is overcast. The text 'www.PetroRigs.com' is overlaid in the center of the image.

[www.PetroRigs.com](http://www.PetroRigs.com)



[www.PetroRigs.com](http://www.PetroRigs.com)





[www.PetroRigs.com](http://www.PetroRigs.com)



[www.PetroRigs.com](http://www.PetroRigs.com)

[www.PetroRigs.com](http://www.PetroRigs.com)





[www.PetroRigs.com](http://www.PetroRigs.com)



[www.PetroRigs.com](http://www.PetroRigs.com)



[www.PetroRigs.com](http://www.PetroRigs.com)





[www.PetroRigs.com](http://www.PetroRigs.com)



[www.PetroRigs.com](http://www.PetroRigs.com)